

LED light lines for office lighting



HOLDBOX®

LIGHT LINES AND LUMINAIRES
WITH HIGH EFFICIENCY

Project: HOLDBOX, office in Bieniewiec, Poland



POWERED BY
Vossloh Schwabe GmbH



LINE - N



LINE - P

Application

Light lines / luminaires / general illumination

- Office lighting
- Store and communication lighting

Operating parameters

- Input power: mains 220-240V/50-60Hz

Material

- Silver anodized aluminum

Options

- Surface and flush version
- Possibility to make light lines / luminaires with different lengths
- Transparent or frosted cover
- Additional equipment - mounting springs, wall and ceiling holders, steel suspension wires

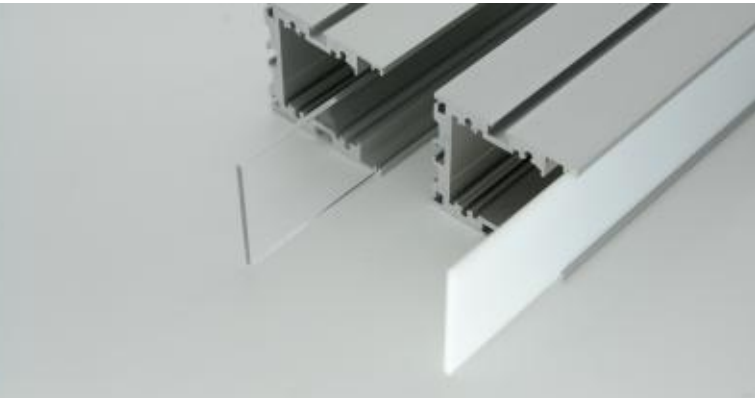
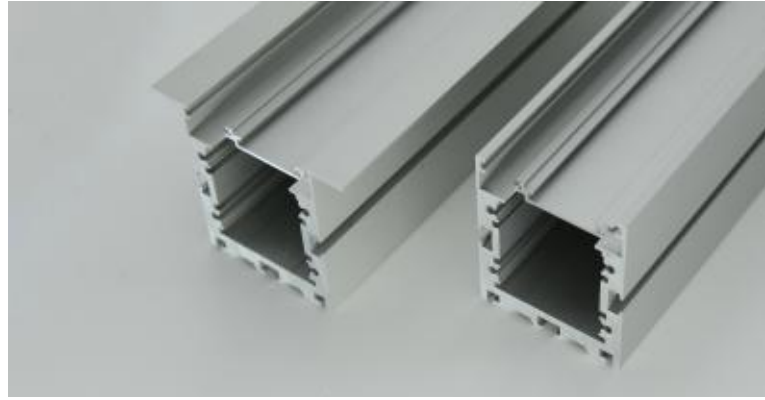
LED light sources and power supply

VS LIGHTING SOLUTIONS

- LONG LIFESPAN: minimum 60 000 hours (L80, B10)
- HIGH EFFICIENCY: up to 179 lm/W
- COLOR RENDERING INDEX: Ra > 80
- 3 STANDARD LENGTHS AVAILABLE: 14, 28, 56cm
- 2 DIFFERENT SPACING BETWEEN SMD LEDs: 1.4cm; 2.8cm
- LIGHT SOURCES SUPPLIED BY CONSTANT CURRENT LED DRIVER

HOUSING

surface
flush



COVER

transparent
frosted

ENDING CAPS

grey ABS



MOUNTING

wall holder
ceiling holder

SUSPENSION WIRES

steel wire with adjustable length

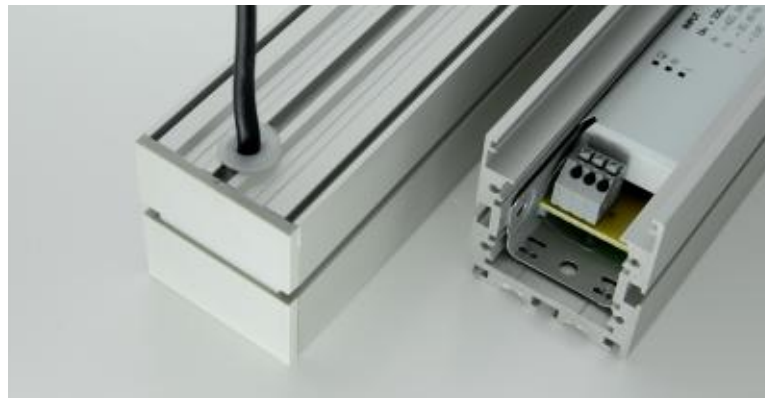


SPRINGS

flush mounting

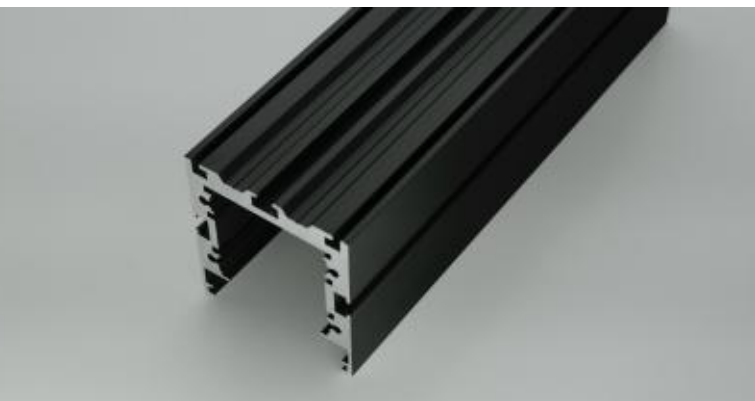
POWER SUPPLY

internal LED driver



PAINTING

any RAL color as an option



LIGHT SOURCES

Vossloh-Schwabe LED modules with optional 14, 28, 56cm length

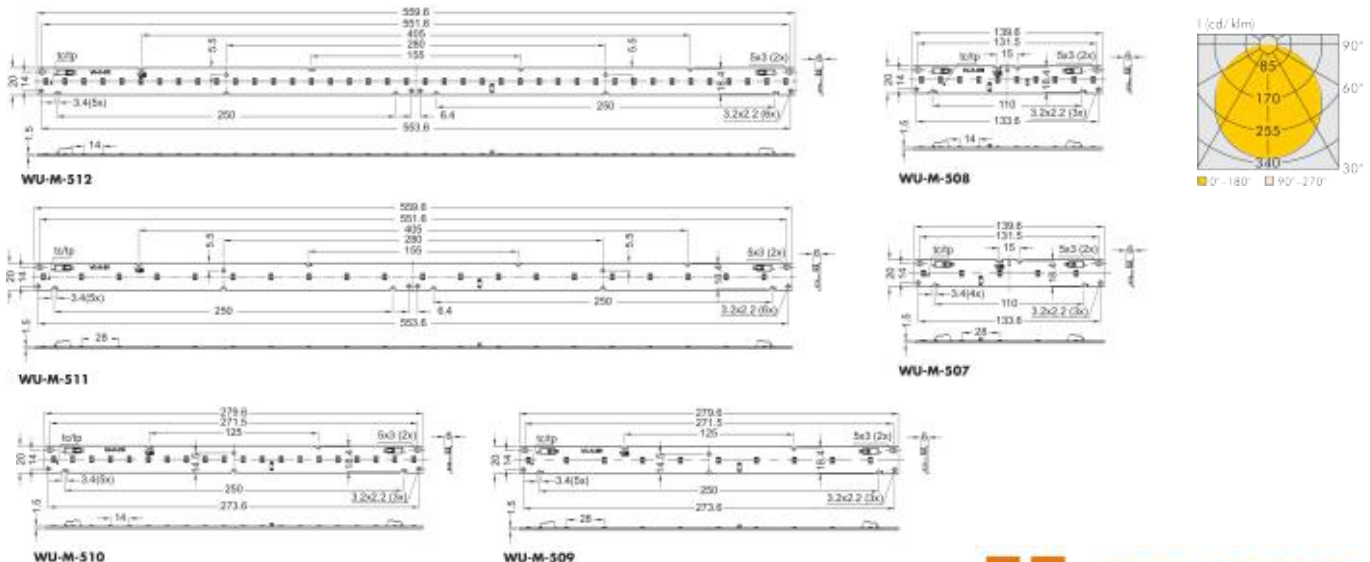


Standard

Type	Ref.No.	LED quantity	Color	Color temperature	Lumen (lm), luminous efficiency (lm/W), typical voltage (U_{typ}), power consumption (P_{el})									Beam angle	Color rendering	
					350mA			500mA			700mA				index CRI	typ. Ra
		pcs.		K	min. lm	typ. lm	typ. lm/W	min. lm	typ. lm	typ. lm/W	min. lm	typ. lm	typ. lm/W	°	min. Ra	typ. Ra
14cm - 5 SMD LEDs					$P_{el} = 0.99W$ $U_{typ.} = 2.83V$			$P_{el} = 1.47W$ $U_{typ.} = 2.94V$			$P_{el} = 2.15W$ $U_{typ.} = 3.07V$					
WU-M-507-G-830	560176	5	warm white	3000	145	155	156	200	215	148	270	295	138	120	80	85
WU-M-507-G-840	560177	5	neutral white	4000	150	160	164	210	225	155	285	310	144	120	80	85
WU-M-507-G-850	560179	5	neutral white	5000	155	175	179	215	250	169	295	335	157	120	80	85
WU-M-507-G-865	560180	5	cool white	6500	155	170	172	215	240	162	295	325	151	120	80	85
14cm - 10 SMD LEDs					$P_{el} = 1.98W$ $U_{typ.} = 5.67V$			$P_{el} = 2.94W$ $U_{typ.} = 5.88V$			$P_{el} = 4.29W$ $U_{typ.} = 6.13V$					
WU-M-508-G-830	560164	10	warm white	3000	285	310	156	400	435	148	545	590	138	120	80	85
WU-M-508-G-840	560165	10	neutral white	4000	300	325	164	415	455	155	570	620	144	120	80	85
WU-M-508-G-850	560166	10	neutral white	5000	310	355	179	435	495	169	590	675	157	120	80	85
WU-M-508-G-865	560167	10	cool white	6500	310	340	172	435	475	162	590	650	151	120	80	85
28cm - 10 SMD LEDs					$P_{el} = 1.98W$ $U_{typ.} = 5.67V$			$P_{el} = 2.94W$ $U_{typ.} = 5.88V$			$P_{el} = 4.29W$ $U_{typ.} = 6.13V$					
WU-M-509-G-830	560181	10	warm white	3000	285	310	156	400	435	148	545	590	138	120	80	85
WU-M-509-G-840	560182	10	neutral white	4000	300	325	164	415	455	155	570	620	144	120	80	85
WU-M-509-G-850	560183	10	neutral white	5000	310	355	179	435	495	169	590	675	157	120	80	85
WU-M-509-G-865	560184	10	cool white	6500	310	340	172	435	475	162	590	650	151	120	80	85
28cm - 20 SMD LEDs					$P_{el} = 3.97W$ $U_{typ.} = 11.33V$			$P_{el} = 5.88W$ $U_{typ.} = 11.76V$			$P_{el} = 8.58W$ $U_{typ.} = 12.26V$					
WU-M-510-G-830	560168	20	warm white	3000	570	620	156	800	870	148	1090	1180	138	120	80	85
WU-M-510-G-840	560169	20	neutral white	4000	595	650	164	835	910	155	1135	1235	144	120	80	85
WU-M-510-G-850	560170	20	neutral white	5000	620	710	179	870	990	169	1180	1350	157	120	80	85
WU-M-510-G-865	560171	20	cool white	6500	620	680	172	870	955	162	1180	1300	151	120	80	85
56cm - 20 SMD LEDs					$P_{el} = 3.97W$ $U_{typ.} = 11.33V$			$P_{el} = 5.88W$ $U_{typ.} = 11.76V$			$P_{el} = 8.58W$ $U_{typ.} = 12.26V$					
WU-M-511-G-830	560185	20	warm white	3000	570	620	156	800	870	148	1090	1180	138	120	80	85
WU-M-511-G-840	560186	20	neutral white	4000	595	650	164	835	910	155	1135	1235	144	120	80	85
WU-M-511-G-850	560187	20	neutral white	5000	620	710	179	870	990	169	1180	1350	157	120	80	85
WU-M-511-G-865	560188	20	cool white	6500	620	680	172	870	955	162	1180	1300	151	120	80	85
56cm - 40 SMD LEDs					$P_{el} = 7.93W$ $U_{typ.} = 22.66V$			$P_{el} = 11.76W$ $U_{typ.} = 23.51V$			$P_{el} = 17.17W$ $U_{typ.} = 24.53V$					
WU-M-512-G-830	560172	40	warm white	3000	1140	1240	156	1600	1735	148	2175	2365	138	120	80	85
WU-M-512-G-840	560173	40	neutral white	4000	1190	1300	164	1670	1815	155	2270	2475	144	120	80	85
WU-M-512-G-850	560174	40	neutral white	5000	1240	1415	179	1735	1985	169	2365	2700	157	120	80	85
WU-M-512-G-865	560175	40	cool white	6500	1240	1365	172	1735	1910	162	2365	2600	151	120	80	85

High brightness

Type	Ref.No.	LED quantity pcs.	Color	Color temperature K	Lumen (lm), luminous efficiency (lm/W), typical voltage (U_{typ}), power consumption (P_{el})									Beam angle °	Color rendering index CRI	
					350mA			500mA			700mA				min. Ra	typ. Ra
					min. lm	typ. lm	typ. lm/W	min. lm	typ. lm	typ. lm/W	min. lm	typ. lm	typ. lm/W			
14cm - 5 SMD LEDs					$P_{el} = 1.97W$ $U_{typ.} = 5.63V$			$P_{el} = 2.91W$ $U_{typ.} = 5.82V$			$P_{el} = 4.24W$ $U_{typ.} = 6.05V$					
WU-M-507-G-HB-830	560201	5	warm white	3000	260	290	146	360	405	139	495	550	129	120	80	85
WU-M-507-G-HB-840	560202	5	neutral white	4000	270	305	155	375	425	146	515	580	137	120	80	85
WU-M-507-G-HB-850	560203	5	neutral white	5000	280	320	162	395	445	153	535	605	143	120	80	85
WU-M-507-G-HB-865	560204	5	cool white	6500	280	310	158	395	435	150	535	590	140	120	80	85
14cm - 10 SMD LEDs					$P_{el} = 3.94W$ $U_{typ.} = 11.26V$			$P_{el} = 5.82W$ $U_{typ.} = 11.36V$			$P_{el} = 8.47W$ $U_{typ.} = 12.10V$					
WU-M-508-G-HB-830	560189	10	warm white	3000	520	575	146	725	805	139	985	1095	129	120	80	85
WU-M-508-G-HB-840	560190	10	neutral white	4000	540	610	155	755	850	146	1025	1160	137	120	80	85
WU-M-508-G-HB-850	560191	10	neutral white	5000	565	635	162	785	890	153	1070	1210	143	120	80	85
WU-M-508-G-HB-865	560192	10	cool white	6500	565	625	158	785	870	150	1070	1185	140	120	80	85
28cm - 10 SMD LEDs					$P_{el} = 3.94W$ $U_{typ.} = 11.26V$			$P_{el} = 5.82W$ $U_{typ.} = 11.36V$			$P_{el} = 8.47W$ $U_{typ.} = 12.10V$					
WU-M-509-G-HB-830	560205	10	warm white	3000	520	575	146	725	805	139	985	1095	129	120	80	85
WU-M-509-G-HB-840	560206	10	neutral white	4000	540	610	155	755	850	146	1025	1160	137	120	80	85
WU-M-509-G-HB-850	560207	10	neutral white	5000	565	635	162	785	890	153	1070	1210	143	120	80	85
WU-M-509-G-HB-865	560208	10	cool white	6500	565	625	158	785	870	150	1070	1185	140	120	80	85
28cm - 20 SMD LEDs					$P_{el} = 7.89W$ $U_{typ.} = 22.53V$			$P_{el} = 11.64W$ $U_{typ.} = 23.27V$			$P_{el} = 16.94W$ $U_{typ.} = 24.20V$					
WU-M-510-G-HB-830	560193	20	warm white	3000	1035	1155	146	1450	1610	139	1970	2190	129	120	80	85
WU-M-510-G-HB-840	560194	20	neutral white	4000	1080	1220	155	1510	1705	146	2050	2315	137	120	80	85
WU-M-510-G-HB-850	560195	20	neutral white	5000	1125	1275	162	1575	1780	153	2140	2420	143	120	80	85
WU-M-510-G-HB-865	560196	20	cool white	6500	1125	1245	158	1575	1745	150	2140	2370	140	120	80	85
56cm - 20 SMD LEDs					$P_{el} = 7.89W$ $U_{typ.} = 22.53V$			$P_{el} = 11.64W$ $U_{typ.} = 23.27V$			$P_{el} = 16.94W$ $U_{typ.} = 24.20V$					
WU-M-511-G-HB-830	560209	20	warm white	3000	1035	1155	146	1450	1615	139	1970	2190	129	120	80	85
WU-M-511-G-HB-840	560210	20	neutral white	4000	1080	1220	155	1510	1705	146	2050	2315	137	120	80	85
WU-M-511-G-HB-850	560211	20	neutral white	5000	1125	1275	162	1575	1780	153	2140	2420	143	120	80	85
WU-M-511-G-HB-865	560212	20	cool white	6500	1125	1245	158	1575	1745	150	2140	2370	140	120	80	85
56cm - 40 SMD LEDs					$P_{el} = 15.77W$ $U_{typ.} = 45.05V$			$P_{el} = 23.27W$ $U_{typ.} = 46.53V$			$P_{el} = 33.88W$ $U_{typ.} = 48.40V$					
WU-M-512-G-HB-830	560197	40	warm white	3000	2075	2305	146	2900	3225	139	3940	4385	129	120	80	85
WU-M-512-G-HB-840	560198	40	neutral white	4000	2155	2435	155	3015	3405	146	4100	4630	137	120	80	85
WU-M-512-G-HB-850	560199	40	neutral white	5000	2250	2550	162	3150	3565	153	4280	4840	143	120	80	85
WU-M-512-G-HB-865	560200	40	cool white	6500	2250	2490	158	3150	3485	150	4280	4735	140	120	80	85



LED DRIVERS

Vossloh-Schwabe constant current LED drivers to choose



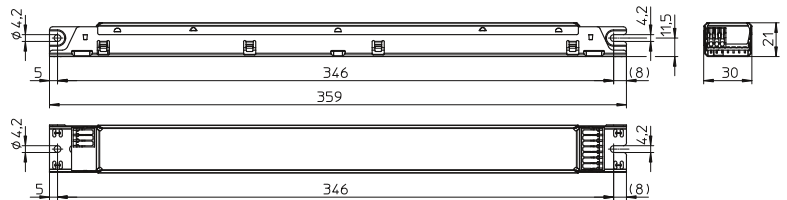
350/500/700mA constant current LED drivers

Standard - not adjustable

Operating parameters

- Operating current: 350/500/700mA
- Input voltage: 220-240V/50-60Hz
- Power factor: 0,97
- Protection: IP20
- Protection class: I

M10



Output power W	Type	Ref.No.	Input voltage 50-60Hz V	Input current mA	Output current DC mA	Output voltage DC V	Max. voltage without load DC V	Efficiency at full load % (230V)	Ambient temperature t_a °C	Casing temperature t_c °C	Weight g
-------------------	------	---------	-------------------------------	---------------------	----------------------------	---------------------------	---	--	------------------------------------	-----------------------------------	-------------

M10 - Dimensions 359 x 30 x 21mm

40	ECXe 700.148	186444	220-240	400-370	350 ±5%	57-114	< 250	> 90	-25 - 50	60	227
				420-390	500 ±5%	40-80		> 89		65	
				420-390	700 ±5%	28-57		> 88		70	
79 85	ECXe 700.147	186443	220-240	200-190	350 ±5%	120-225	< 250	> 94	-25 - 50	70	250
				205-190	500 ±5%	80-170		> 93		75	
				210-195	700 ±5%	60-120		> 92		80	

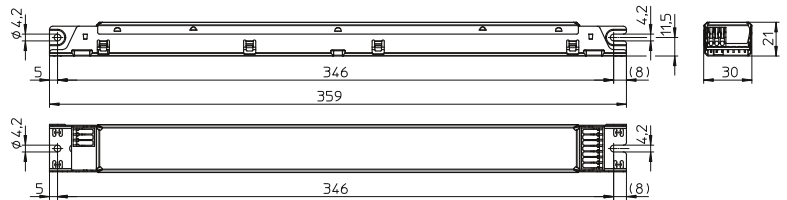
DALI - adjustable



Operating parameters

- Operating current: 350-700mA (adj. every 1mA)
- Input voltage: 220-240V/50-60Hz
- Power factor: 0.97
- Protection: IP20
- Protection class: I
- Brightness adjustment: 3-100%
- Control system: DALI
- VS Application iProgrammer 186428 required for programming

M10



Output power W	Type	Ref.No.	Input voltage 50-60Hz V	Input current mA	Output current DC mA	Output voltage DC V	Max.voltage without load DC V	Efficiency at full load % (230V)	Ambient temperature t_a °C	Casing temperature t_c °C	Weight g
-------------------	------	---------	-------------------------------	---------------------	----------------------------	---------------------------	--	--	------------------------------------	-----------------------------------	-------------

M10 - Dimensions 359 x 30 x 21mm

42	ECXd 700.150	186446	220-240	215-200	350-700 -5/+10%	30-120	< 250	> 88	-25 - 50	60	235
77 84	ECXd 700.149	186445	220-240	410-380	350-700 -5/+7%	60-220	< 250	> 88	-25 - 50	70	265



HOLDBOX[®]

www.holdbox.eu

Poland
Bieniewiec, Katowicka 11 str, 96-321 Żabia Wola
ph.: +48 22 490 91 13..18
fax: +48 22 490 91 19
biuro@holdbox.eu