



Robust, low maintenance, energy saving Industrial LED High Bay

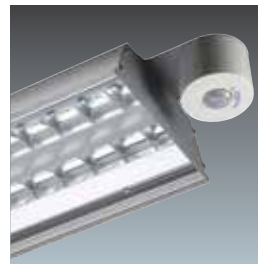
- New IP ratings (IP43 and IP66) offer greater application flexibility
- Ideal alternative to 250W/400W solutions - up to 45% more energy efficient
- Dedicated individual LED optics for precise light control for racking and open areas
- Integral PIR sensor and DALI dimmable to maximise energy savings
- Dedicated body profile and on board thermal management system ensures LED performance and lifetime
- Long life LEDs (50,000 hours) reduces maintenance lamp changing costs and allows instant light
- A quick fix bracket kit offers the flexibility to join two luminaires together for double the light output (28,000lm)
- Ta 50°C available upon request

Applications

- High level mounting locations
- Logistic centres
- Industrial
- Difficult or costly areas for maintenance
- Exhibition Centre
- Cold storage

Luminaire Information

- Life time 50,000 Hours @L70 Ta 35°C
- IP43/20: 14,000lm - 150W (93 Lm/W)
- IP66: 13,500lm - 150W (90 Lm/W)
- Colour Temperature 4000K
- CRI 70

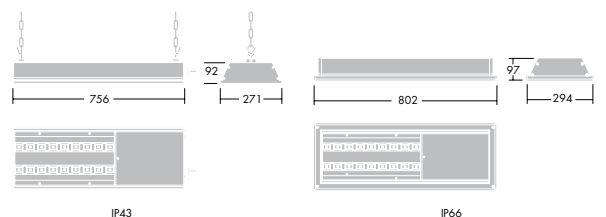
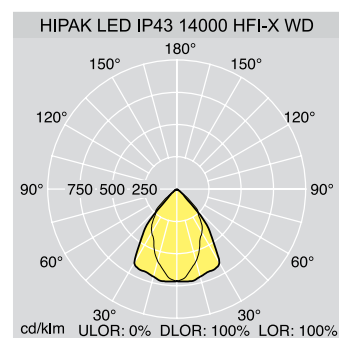


Optional sensor control



IP66 version

Overview



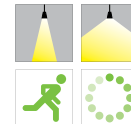
Standards

EN 60598	EN 60598 -2-22	650°C	850°C	IK07	IK08	⊕
T _a +35	E3 T _a +30°C	IP20	IP43	IP66	CE	

IP43 and IP66 versions - IK08 and 850°
IP20 with Sensor - IK07 and 650°

Lamps

90-93 Llm/W

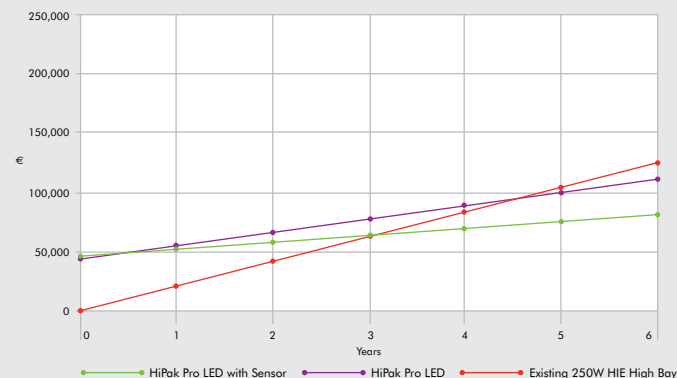


Energy efficiency: Warehouse 50m x 75m x 10m

Figure 1. Course of overall costs of solution over lifetime

HiPak Pro LED with sensor payback = 2.9 years
Savings achieved over 10 years €96,656

HiPak Pro LED without sensor payback = 4.4 years
Savings achieved over 10 years €43,990



A warehouse project based on replacing 100 high bay 250W luminaires with either 100 HiPak Pro LED or HiPak Pro LED with sensor, lit to 300 lux over a 10 year period. Operating over a two shift pattern, 16 hour a day, six days a week (4992 hours per year). Sensor option assumes a 40% area occupancy

Figure 2. Investment costs vs. running costs of solution (absolute)

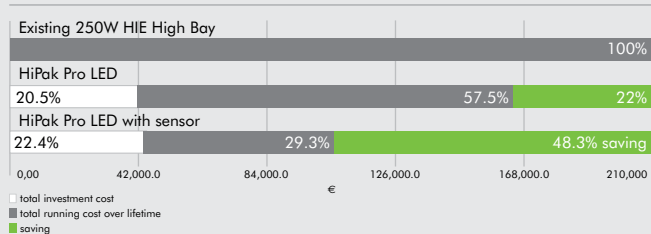
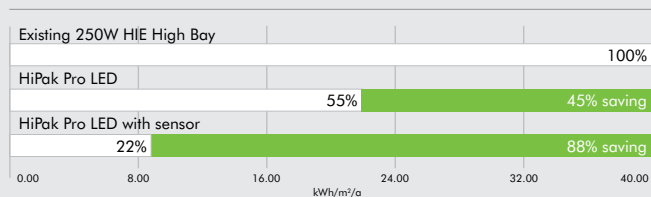


Figure 3. LENI (kWh/m²a)



Ordering Guide

Supplied complete with LEDs. Mounting kits to be ordered separately.

Description	Weight (Kg)	SAP Code	
Luminaire with rack optic			
HIPAK LED IP66 13500 HF ML RK L740	13.9	96241929	NEW
HIPAK LED IP66 13500 HF ML E3 RK L740	14.3	96241930	NEW
HIPAK LED IP66 13500 HFI-X ML RK L740	13.9	96241493	NEW
HIPAK LED IP66 13500 HFI-X ML E3 RK L740	14.3	96241494	NEW
HIPAK LED IP43 14000 HFI-X RK L740	8.8	96241485	
HIPAK LED IP43 14000 HFI-X E3 RK L740	9.2	96241486	
HIPAK LED IP20 14000 HFSX RK L740	9.3	96241487	
HIPAK LED IP20 14000 HFSX E3 RK L740	9.7	96241488	
Luminaire with wide optic			
HIPAK LED IP66 13500 HF ML WD L740	13.9	96241931	NEW
HIPAK LED IP66 13500 HF ML E3 WD L740	14.3	96241932	NEW
HIPAK LED IP66 13500 HFI-X ML WD L740	13.9	96241495	NEW
HIPAK LED IP66 13500 HFI-X ML E3 WD L740	14.3	96241496	NEW
HIPAK LED IP43 14000 HFI-X WD L740	8.8	96241489	
HIPAK LED IP43 14000 HFI-X E3 WD L740	9.2	96241490	
HIPAK LED IP20 14000 HFSX WD L740	9.3	96241491	
HIPAK LED IP20 14000 HFSX E3 WD L740	9.7	96241492	
Mounting kits			
HIPAK LED BRA	0.4	96241497	
HIPAK PRO KIT FIX/CH	0.2	96241507	
HIPAK PRO KIT FIX MCA	0.2	96241515	
Accessories			
HIPAK PRO KIT FIX BRA JOINT*	0.9	96241508	

*Mounting kits are also required to be ordered

HFI-X	Dali dimming only
HFSX	High frequency dimming with sensor,
WD	Wide reflector
RK	Rack reflector
BRA	Trunking bracket,
CH	Chain suspension
MCA	Catenary suspension
BRA JOINT	Joining bracket
HF	On/off
ML	Mains cable

NB: Emergency versions suitable for maximum ambient temperature up to 30°C

Materials/Finish

Housing: anodised aluminium extrusion with steel end caps (IP20/43) or die cast aluminium end caps (IP66) powder painted (close to RAL 9006).
Reflector: high grade MIRO 5 aluminium with plastic front cover
IP66 cover: polycarbonate cover with gasket in a powder coated steel frame

Installation/Mounting

All mounting kits to be ordered separately and clip (tool free) onto the back of the body. For chain suspension use kit 96241507, trunking mounting via 20mm holes use kit 96241497, catenary suspension use kit 96241515. To mechanically join two luminaires together both a mounting kit (options from above) and accessory 96241508 needs to be ordered. IP20/43 versions: 2.5mm² piano key terminal block is accessed via a sliding gear tray cover offering two 20mm cable entries. Integral sensor versions offer movement detection as well as daylight control and can be mounted up to 1.6m heights. Hand held programmer (sap code 96102983) can be used from the floor to customise sensor settings. Emergency versions suitable for maximum ambient temperature up to 30°C. IP66 versions: come supplied with a pre-fitted 2m mains cable (grey), not suitable for looping in and out.

Specification

To specify state:
A LED high bay luminaire made from extruded anodised aluminium, choice of open area or rack optic, electronic gear - dimming, sensor or emergency options, LEDs supplied offering 13,500/14,000 lumen output, 4000K, 50,000 hours, up to 93 Llm/W, sliding gear tray cover for quick terminal block access/pre-fitted mains lead. On board thermal management regulation system monitors LED performance to ensure lifetime and reliability. As Thorn HiPak Pro IP20/43/66.